



## ▪ Restaurant Sector Qualifications ▪





# FIRM PROFILE



Garrison at Stafford, Stafford, VA

**B**ignell Watkins Hasser Architecture & Interiors (BWH) is an award-winning architecture and interior design firm with a diverse portfolio of work in both the Public and Private sectors. We have built a reputation for being technically strong, creative designers who believe collaboration is the key to success. Our multi-disciplinary team has a depth of knowledge and experience that enables us to provide creative solutions for complex projects with budget and timeline in mind.

We have an expansive portfolio in a wide range of market sectors including retail, mixed-use, office, public safety, grocery, senior living, multi-family residential, education, athletic facilities, community centers, religious, and government, with projects ranging from new construction and renovation to adaptive reuse. With over 25 LEED and WELL-certified facilities, our team brings valuable sustainability and wellness expertise to each project we undertake. Our success is measured by the wide range of long-lasting relationships we have built with nationally recognized clients.

**Design Forward. Client Centered.**

**OUR TEAM** has a dynamic approach guided by creativity, collaboration, and design excellence. Office leadership has decades of experience in architecture and interior design with an emphasis on thought-leadership, best practices, and cultivating talent and new ideas.



Target, Middletown, DE



USNA Lacrosse Center, Annapolis, MD





Prince Frederick Vol. Fire Dept., Prince Frederick, MD

## AWARD-WINNING WORK & SUSTAINABLE DESIGN

Our work has been recognized by prestigious local and national institutions for projects in both the Public and Private sectors. Notable achievements include a NAIOP Gold Award in the Capitol Challenge, NAIOP DC/MD Award of Excellence in Retail and NAIOP Baltimore "Retail Project of the Year." We have been honored by AIA Chesapeake for Excellence in Design for our Prince Frederick, Maryland Fire Station and by The Station Design Awards multiple times for both new construction and renovation projects.

We approach each project from a holistic viewpoint with overall design and human wellness at the forefront. Our architects and interior designers take a proactive approach to designing modern and sustainable buildings that are guided by the Leadership in Energy and Environmental Design® (LEED®) green building program and WELL Building Standard™ (WELL™). From improved air quality and sustainable water management to occupant health and wellness, our designs aim to positively impact the people who live, work and occupy the spaces for the life of the building.



Target, Middletown, DE

## SERVICES

### Project Analysis

- Feasibility Studies
- Facility Studies
- Site Studies
- Code Analysis
- Program Requirements

### Planning & Design

- Site & Master Planning
- Space Planning
- Architectural Design
- Interior Design
- Sustainable Design (LEED & WELL)
- Prototype Design
- Prototype
- Implementation
- Historical Restoration
- FF&E Specifications

### Presentation

- 3D Visualization
- Renderings
- Animations
- Graphic Design
- Experiential Graphics
- Comprehensive Sign Plans

### Administration

- Cost Estimation & Control
- Bidding Documents
- Bidding Management
- Negotiation & Award
- Construction
- Administration





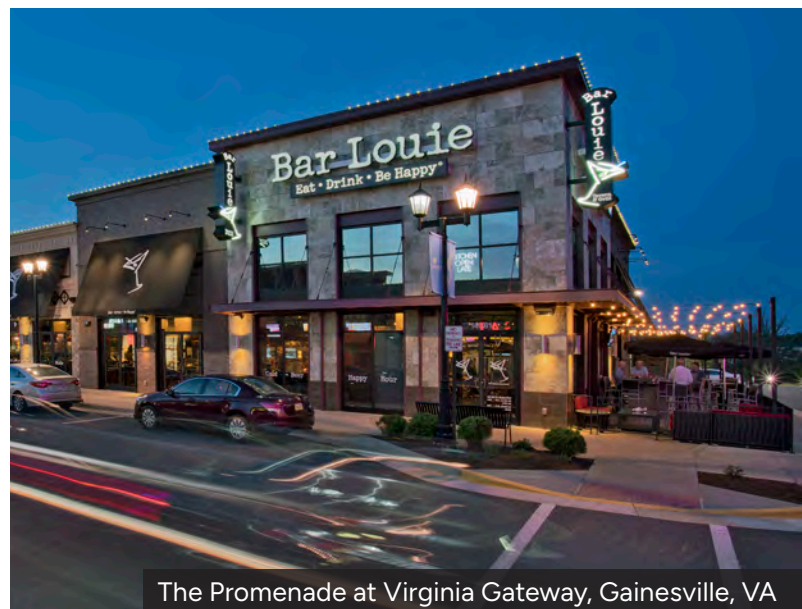
The Field at Commonwealth, Chantilly, VA

## RESTAURANT EXPERTISE

We specialize in designing dynamic, inviting restaurant spaces that blend aesthetic appeal with functionality. With a history working alongside retail developers and restaurateurs, we understand the unique challenges of creating environments that enhance the dining experience. From concept to completion, our team crafts thoughtful designs that reflect the vision of each restaurant while optimizing flow, comfort, and ambiance. Whether it's a cozy bistro, a vibrant urban hotspot, or a high-end dining experience, we bring expertise and passion to every project, ensuring each space is as unforgettable as the meals served within it.



Village Square at Urbana, Frederick, MD



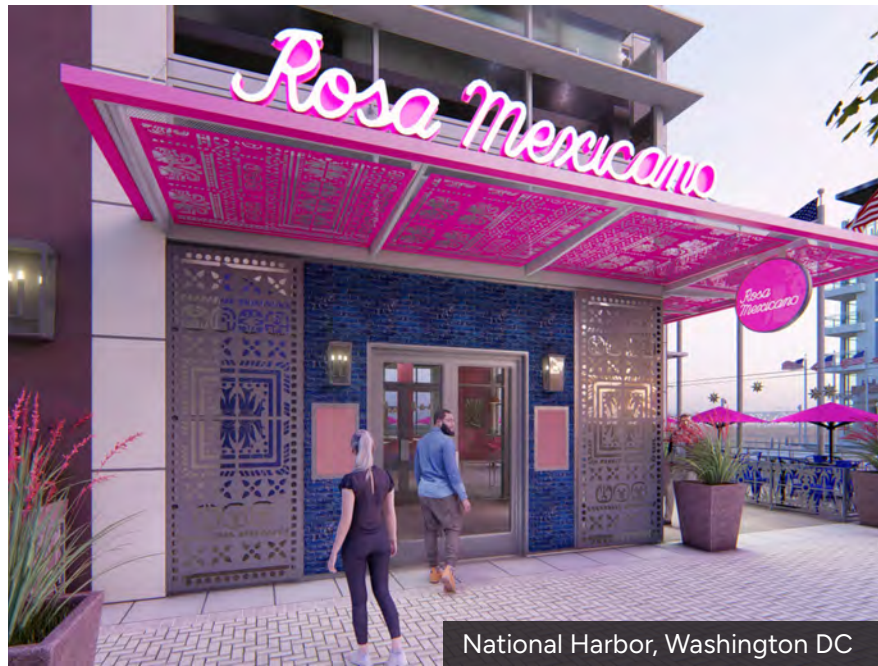
The Promenade at Virginia Gateway, Gainesville, VA



## ROSA MEXICANA

Located in the vibrant National Harbor, Rosa Mexicano offers a unique dining experience that blends upscale Mexican cuisine with a festive atmosphere. BWH provided architectural and interior design services, creating a space that celebrates the bold colors, textures, and cultural richness of Mexico, while elevating the restaurant's modern, sophisticated dining environment.

Our team worked closely with Rosa Mexicano to craft a design that honors the restaurant's legacy. From the dynamic layout to the meticulously curated details, every element was thoughtfully designed to enhance the guest experience and complement the restaurant's mission of delivering an exceptional dining experience rooted in tradition and innovation.



National Harbor, Washington DC



Village Square at Urbana, Frederick, MD

## MANINA PIZZA

Located in Frederick, Maryland, Manina offers a refined farm-to-table dining experience within a sleek, minimalist space. BWH provided architectural and interior design services, creating an environment that mirrors the restaurant's dedication to local ingredients and understated elegance. Collaborating closely with the owners, our team incorporated key design elements, including a central bar, natural wood floors, and large windows, to enhance the dining experience. Every detail, from the wood-burning hearth to the antique baskets on the walls, was thoughtfully curated to foster a timeless, welcoming atmosphere, allowing the focus to remain on the exceptional food and intimate ambiance.

## THE WALRUS OYSTER & ALE HOUSE

Currently in progress at National Harbor, The Walrus Oyster & Ale House will offer an exceptional seafood dining experience within a modern, coastal-inspired setting. BWH is providing architectural and interior design services, crafting a space that reflects the restaurant's focus on fresh, high-quality seafood and a relaxed yet sophisticated atmosphere. Working closely to bring the owner's vision to life, our team is collaborating with a local artist to create custom murals and artwork. Every detail, from nautical elements to warm, inviting materials, will be thoughtfully selected to create a welcoming space that complements the restaurant's coastal charm.



National Harbor, Washington DC





Ashbrook Marketplace, Loudoun County, MD

## CLIENT PARTNERSHIPS

Our success can be measured by the number of long-lasting relationships we have with nationally recognized clients.



## CONTACT

410.224.2727

**Maryland:** One Park Place, Suite 250 Annapolis, MD 21401

**Virginia:** 1934 Old Gallows Road, Suite 350 Vienna, VA 22182

**Website:** [www.bigwaha.com](http://www.bigwaha.com)



Philadelphia, PA

